



Installing TwonkyServer on Microsoft Windows Home Server

**Version 6.0
June 2010**

Proprietary

This document is proprietary and is the exclusive property of PacketVideo Corporation. This document is protected by copyright and trade secret laws.

Trademarks

The Twonky logo is a trademark of PacketVideo Corporation. Other product names, logos, designs, titles, words or phrases mentioned within this document may be trademarks, service marks or trade names of PacketVideo Corporation or other third parties and may be registered in the U.S. or other jurisdictions.

Warranties

THE INFORMATION HEREIN IS PROVIDED TO RECIPIENT ON AN "AS IS" BASIS, WITH NO WARRANTIES OF ANY KIND, EXPRESS OR IMPLIED, INCLUDING ANY WARRANTY OF NON-INFRINGEMENT, MERCHANTABILITY OR FITNESS FOR A PARTICULAR PURPOSE.

Copyright

Copyright © 1999, 2010 PacketVideo Corporation. All rights reserved. This document may not be copied, photocopied, reproduced, translated, or converted to any electronic or machine-readable form in whole or in part without prior written approval of PacketVideo Corporation.

Table of Contents

1	Introduction	4
2	Connect WHS with remote desktop.	4
2.1	Create share folder in WHS system	5
2.2	Go back to remote desktop connection to finish the installation	6
2.3	Configure TwonkyServer	7

1 Introduction

The purpose of this document is to describe how to install the standard Windows PC build of the TwonkyServer onto Microsoft Windows Home Server platforms. Since the WHS platform is built on top of Windows, it is possible to install the Windows PC version of TwonkyServer onto WHS devices; however, this requires the use of Remote Desktop (RDP) instead of the usual WHS console interface. This document describes the necessary steps to do this installation procedure using RDP. For the installation process itself and the configuration of TwonkyServer, please refer to the Windows installation guide that can be downloaded from <http://www.twonky.com/products/twonkyserver/tryit.aspx>

2 Connect WHS with remote desktop.

Remote Desktop is a standard utility that is included with PCs running Windows 95 and later. Remote Desktop allows the user to log-on to another Windows machine and completely control it as they would their own PC. For our installation procedure, we will utilize Remote Desktop to provide a way to download the TwonkyServer installation directly to the WHS machine in the same way that it is done for standard Windows PCs.

To connect to your WHS system using Remote Desktop, perform the following steps:

1. On your computer, click **Start**, point to **All Programs**, and then point to **Accessories**.
2. In the **Accessories** menu, point to **Communications**, and then click **Remote Desktop Connection**.
3. In the **Computer** box, type the name of your WHS machine.

When you connect to your WHS system, you will see a window like the one below (depending on your WHS name):



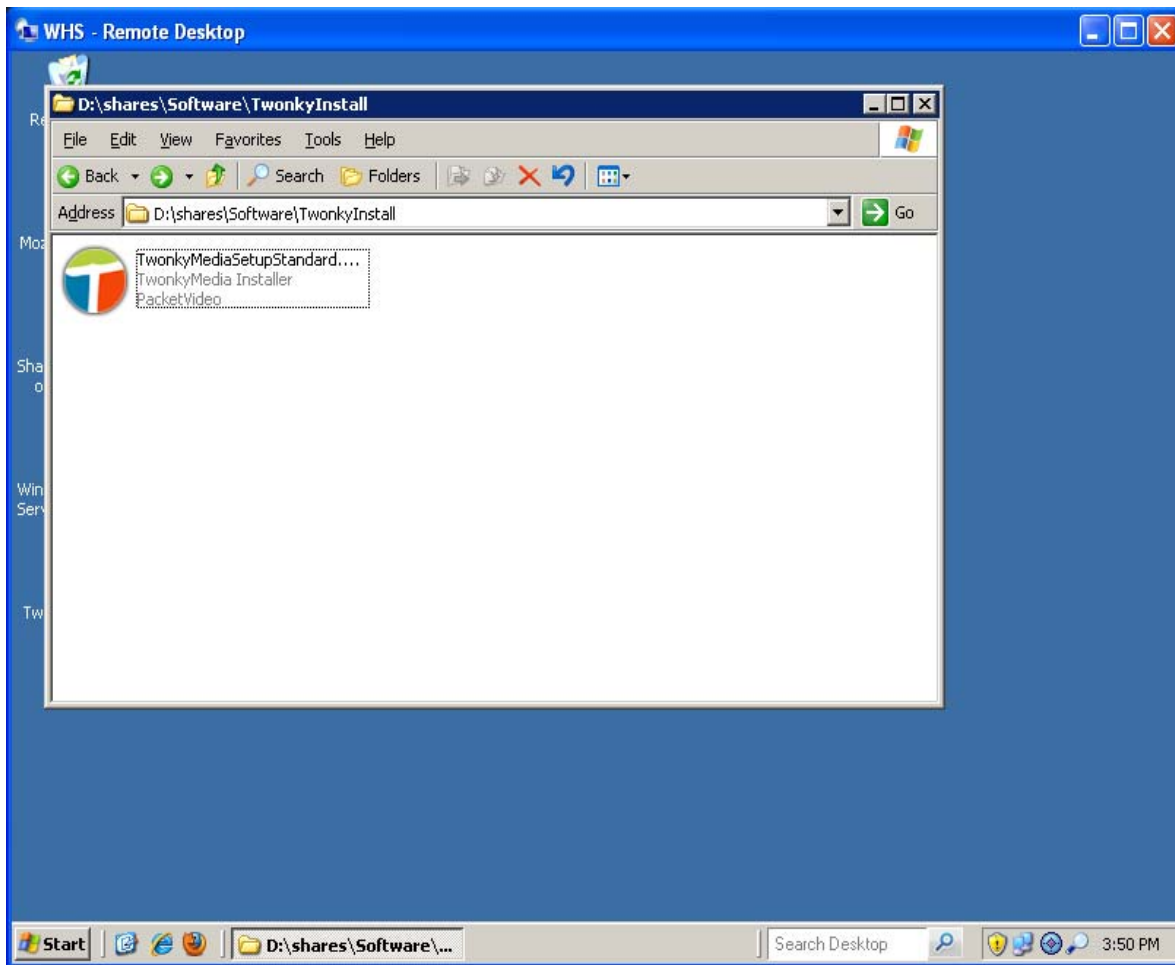
Picture 1. Remote Desktop Connection.

Installing TwonkyServer on Microsoft Windows Home Server

2.1 Create share folder in WHS system

Perform the following steps:

1. After you have logged onto the WHS system, create a share folder.
For more details about sharing folders see: <http://support.microsoft.com/kb/304040>
2. Leave the Remote Desktop Connection temporarily and go back to your PC screen.
3. From your PC, download the Windows XP/Vista/7 TwonkyServer installation package from <http://www.twonky.com/products/twonkyserver/tryit.aspx> and copy it to the shared folder of your WHS system.

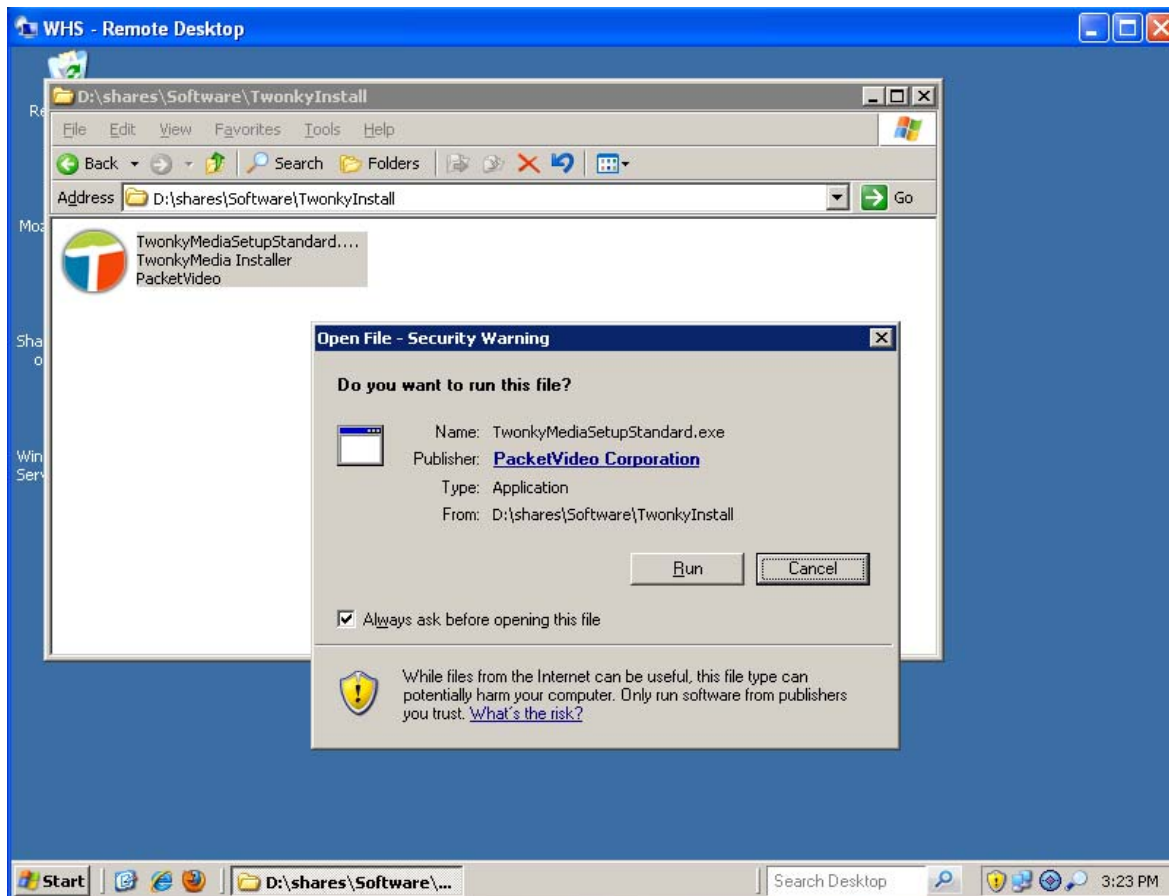


Picture 2. Server installation package.

2.2 Go back to Remote Desktop Connection to finish the installation

Perform the following steps:

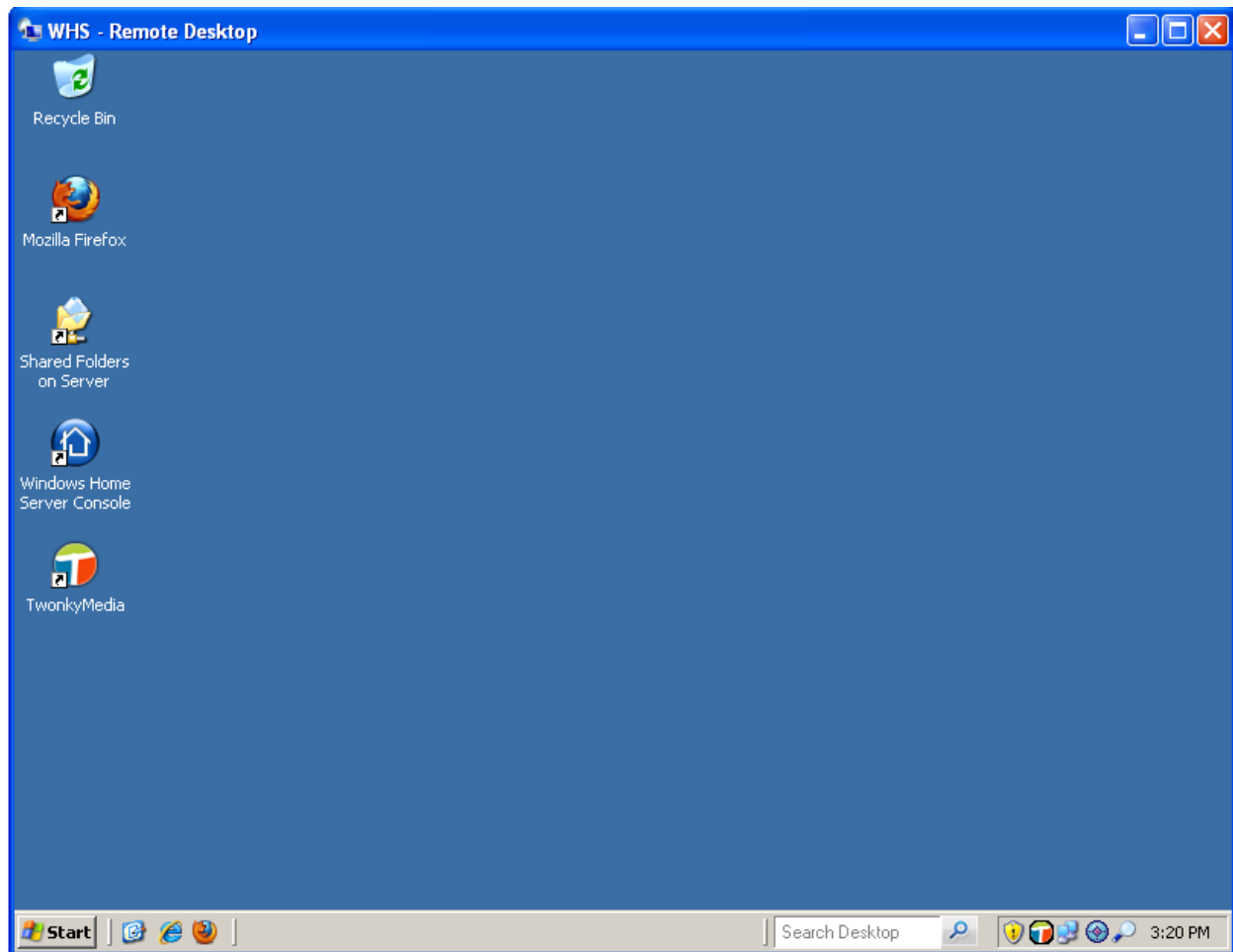
1. Go back to your Remote Desktop Connection and find the shared folder where you have placed the TwonkyServer installation file.
2. Double click to run the server installation executable.



Picture 3. Installing TwonkyServer.

3. Click **Run** to proceed. The detailed installation steps are explained in the Windows installation guide.
4. After successful installation, TwonkyServer is running on your WHS system, as indicated by the taskbar icon in the lower right corner.

Installing TwonkyServer on Microsoft Windows Home Server



Picture 4. Install completed.

2.3 Configure TwonkyServer

There are different ways to configure the TwonkyServer running on your WHS system:

1. Go back to your PC and access the URL: <http://whs:9000/config> with a web browser. Please note that you might need to replace the "whs" in the URL with the name of your WHS system.
2. By default, the TwonkyServer installer will choose media share paths under C:\My Documents. You may need to change these paths to the location of your media shares on the WHS system, for example: D:\shares\Music, D:\shares\Photos, and D:\shares\Videos

You can do this by selecting the **Sharing** link under the **Basic Setup** settings on the configuration menu.

3. From the Remote Desktop Connection, you can also access the configuration pages by clicking the tray icon and selecting **Media server settings**, which will open the same

Installing TwonkyServer on Microsoft Windows Home Server

web page as above. However, you have to add the host address to the trusted sites. This can be configured from Internet Explorer: Tools → Internet Options → Security → Trusted sites. When using Firefox, this is not an issue.

For further details regarding configuration options, please refer to the general installation guide for the TwonkyServer, available at <http://www.twonky.com/products/twonkyserver/tryit.aspx>